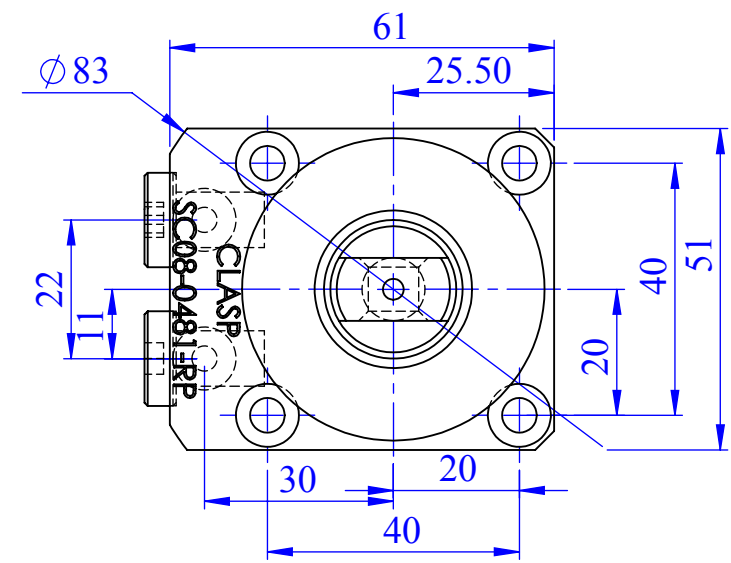








SC08-0481-RP

Bore dia -	35mm
Piston dia -	22mm
Swing stroke 90° -	10mm
stright stroke -	10mm
Full stroke -	20mm



General Tolerance where not specified									
Liner – length or Diameter					Angular-length of shoter side of the angle				
0.5–6	6–30	30–120	120–315	315–1000	1000–2000	Upto 6	6–30	30–120	120–400
±0.1	±0.2	±0.3	±0.5	±0.8	±1.2	±1°	±30°	±10°	±20°

Surface Finish											ZONE	SCALE	1:1		PROJECTION		
Ra Value µm	0.025	0.05	0.1	0.2	0.4	0.8	1.6	3.2	6.3	12.5	25	50	100				
Ra Symbol	N1	N3	N2	N4	N5	N6	N7	N8	N9	N10	N11	N12					
														GROUP No:—		WEIGHT	
														SWING		Wt.Kgs	
			DESCRIPTION										Qty.		Casting/forging/ welding drg.no		
Drawn	Prabhakar	SWING CYLINDER SC08-0481-RP										01					
Checked	Prabhakar											Drawing NO					
Approved	19/09/21																
Date	19/09/21																
Clamping elements type		CLASP BANGALORE-72										SHEET: 1 of 1		Sheet No: 1/1			